

POWERFUL AND INTERACTIVE WEBCASTING PLATFORM FOR ONLINE TRAINING AND EDUCATION

ENJOY HUGE COST SAVINGS AND AN IMMEDIATE BOOST
IN FLEXIBILITY

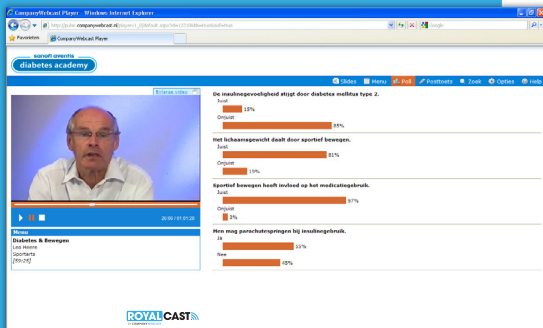
As an E-Learning & Development Manager, Education & Training Manager or other staff member involved in employee training, you are responsible within your organization for retention and development of the level of knowledge and education of your company's employees.

In today's world, it is becoming increasingly difficult to get a group of managers and/or employees together at the same time and place for training or education. Especially when they are scattered throughout The Netherlands and/or the rest of the world. In addition to this, physical meetings incur a lot of inactive hours and a good chunk of change in expenses, such as travel and accommodations.

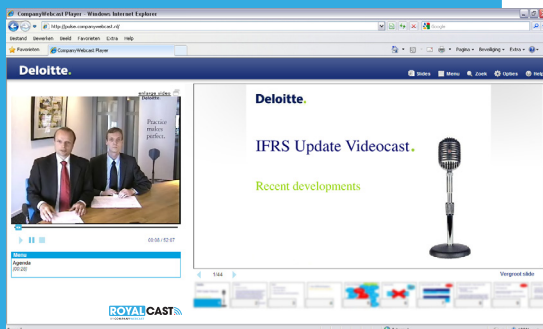
But you still need to invest in training and education because knowledge is a vital 'asset' for any company. After all, if your employees and management have better and more up-to-date knowledge, you can distinguish yourself from the competition and your company will be in an even better position to meet the customer's needs and achieve higher turnover. A Webcast can also be used to earn 'certification' or 'permanent education' points for your managers and employees.

An innovative Webcast over the RoyalCast platform by Company Webcast offers you a cost-effective, powerful and interactive tool for training and/or educating your employees. This lets the employees decide for themselves when and where they will take the online training and/or educational programme.

Time and place truly no longer matter.



During a Webinar you can check the knowledge immediately.



Deloitte provides accountants updates.

WHAT IS WEBCASTING?

Webcasting allows you to harness the power of video and PowerPoint slides to have, for example, your target group follow a live presentation from your CEO or Director. If you wish, viewers can also participate interactively in the Webcast. Naturally the Webcast is also available on demand straight afterwards, which means that you can reach your target group both Live and On Demand on PC, laptop and mobile devices. Time and location are no longer important.

The fact that the video can be enriched with options such as PowerPoint slides, polls, tests and the option of allowing the viewer to ask questions, enables you to add interactivity. Thanks to easy-to-read statistical overviews, you are given a clear picture for each Webcast of the number of viewers, who viewed it, for how long and when.



WHAT DOES COMPANY WEBCAST OFFER?

Broadly speaking, Company Webcast offers you two scenarios. Of course options in-between are also possible. The options are basically as follows:

SCENARIO 1: PRODUCE INDEPENDENTLY AND UNLIMITED WEBCASTS IN A FEW STEPS.

Our RoyalCast Webcast platform enables you to choose to produce Webcasts extremely easily, independently and without restrictions and to distribute these to your target group. You can decide for yourself when, how often and from where you want to Webcast.

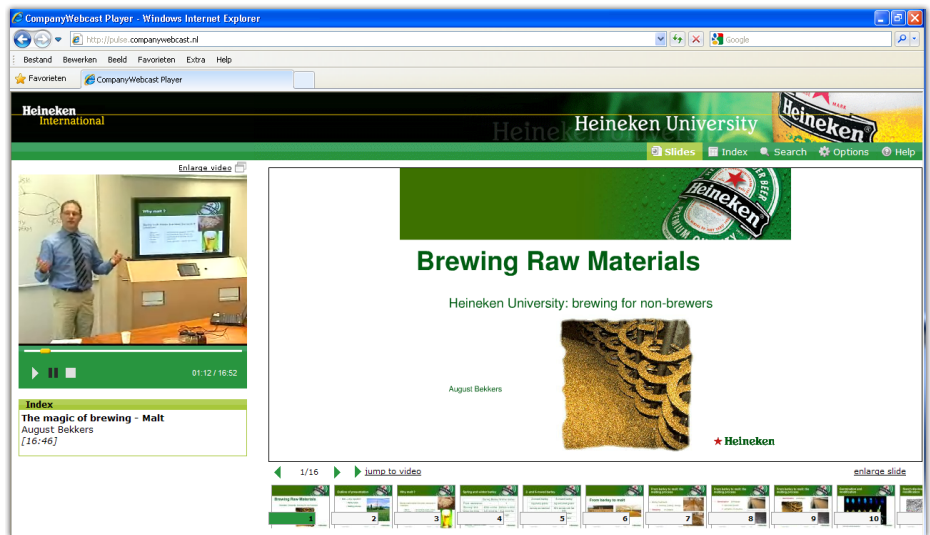
RoyalCast is a unique and advanced 'Plug & Play' Webcast platform that is based on our 'One to Many' philosophy. After the Webcast Encoder has been installed and connected to the audiovisual equipment and you have followed a short training session, you will be able to get going immediately with the Online RoyalCast Manager. If you already have cameras or audio systems, then RoyalCast can be connected up to these extremely easily. If you do not have your own audiovisual equipment, we can supply you with this too.

SCENARIO 2: FULL SERVICE WEBCAST.

If you go for a Full Service Webcast, then we take the entire Webcast production process off your hands and provide you with a high-quality Webcast. This allows you to use our Full Service Webcast service at any given location. This service also makes use of the RoyalCast Webcast platform developed in-house by Company Webcast. From the perspective of our portfolio we also offer video production under the rubric of 'Production Services'.

Please do not hesitate to contact us for a personalized quotation!

We are also the right company if you would like to Webcast a meeting abroad. We work throughout the world and regularly take care of Webcasts in such countries as England, Belgium, Germany and the United States.



Heineken University uses Webcasting as a part of her education program.

WITH AN INTERACTIVE WEBCAST...

- ✓ You can deploy your online training and/or educational programmes in a highly targeted manner. Time and place are no longer important.
- ✓ You create an online instructional library.
- ✓ You can anchor a great deal of knowledge and disseminate it in a simple and controlled manner.
- ✓ You can search for specific parts later on in a highly targeted manner.
- ✓ You have interactive modules and certification options at your disposal.
- ✓ You gain access to extensive management information on each Webcast and viewer.
- ✓ You will reach your target group live and on demand via the Internet and mobile phones.
- ✓ You will acquire our proven technology in-house, just like hundreds of other organizations.
- ✓ You will save your organization time and money on travel and accommodation expenses.
- ✓ You will reduce the number of inactive hours for your management and staff.
- ✓ You can elaborate on possible policy on sustainability and flexible working.

ROYALCAST® IS A PRODUCT OF COMPANY WEBCAST

RoyalCast is the Webcast platform of Company Webcast. RoyalCast is a unique Webcasting platform and offers 'Plug & Play' Webcast solutions for both the viewer and the user. Choosing RoyalCast means choosing quality, professionalism and security.

ABOUT COMPANY WEBCAST

Company Webcast specializes in Webcasting and thanks to our customers, partners and user-friendly solution we are market leader within the Benelux region. Our customers use Webcasting for things such as Investor Relations, Corporate Communication, Internal Communication, Marketing Communication and refresher training (accredited or otherwise). From our office in the Rivium near Rotterdam, we are active worldwide for more than 200 organizations such as Heineken, Shell, AkzoNobel, AEGON, AstraZeneca, the Province of South Holland and Exact.

For further information, please refer to our website.

COMPANY WEBCAST

Phone: + 31 (0)10 – 28 29 500
info@companyWebcast.com
www.companyWebcast.com

POSTAL ADDRESS
Postbus 4461
3006 AL Rotterdam
The Netherlands

VISITATION ADDRESS
Crystal Building B
Rivium Boulevard 220
2909 LK Capelle Aan Den IJssel
The Netherlands